

Anatomie d'un complexe  
récifal de type West Point

Anatomy of a West Point  
Reef Complex

Bernard Granger,

(Collaborators: Daniel Brisebois and Martin Bêche)

Pétrolia

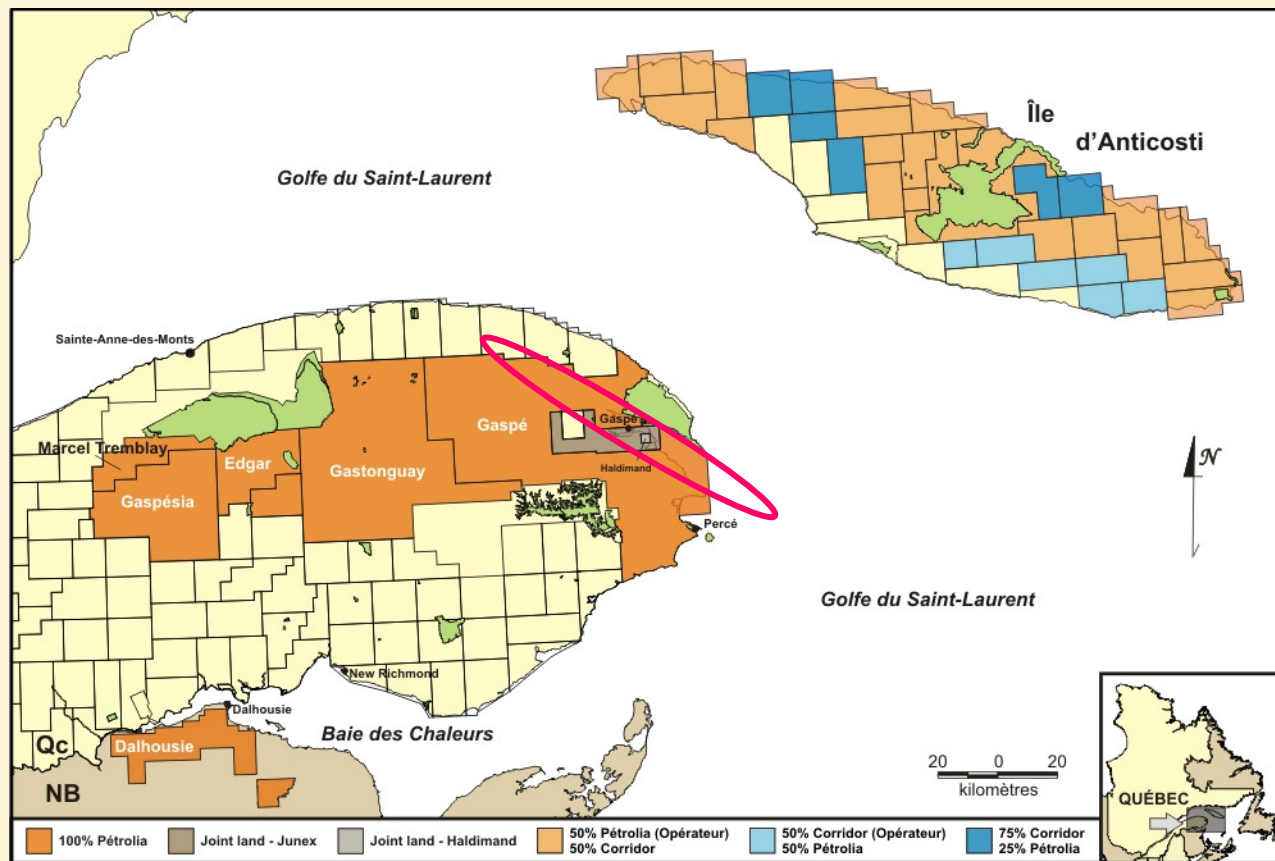


- Introduction
- The West Point Reef Complex
- Conclusions

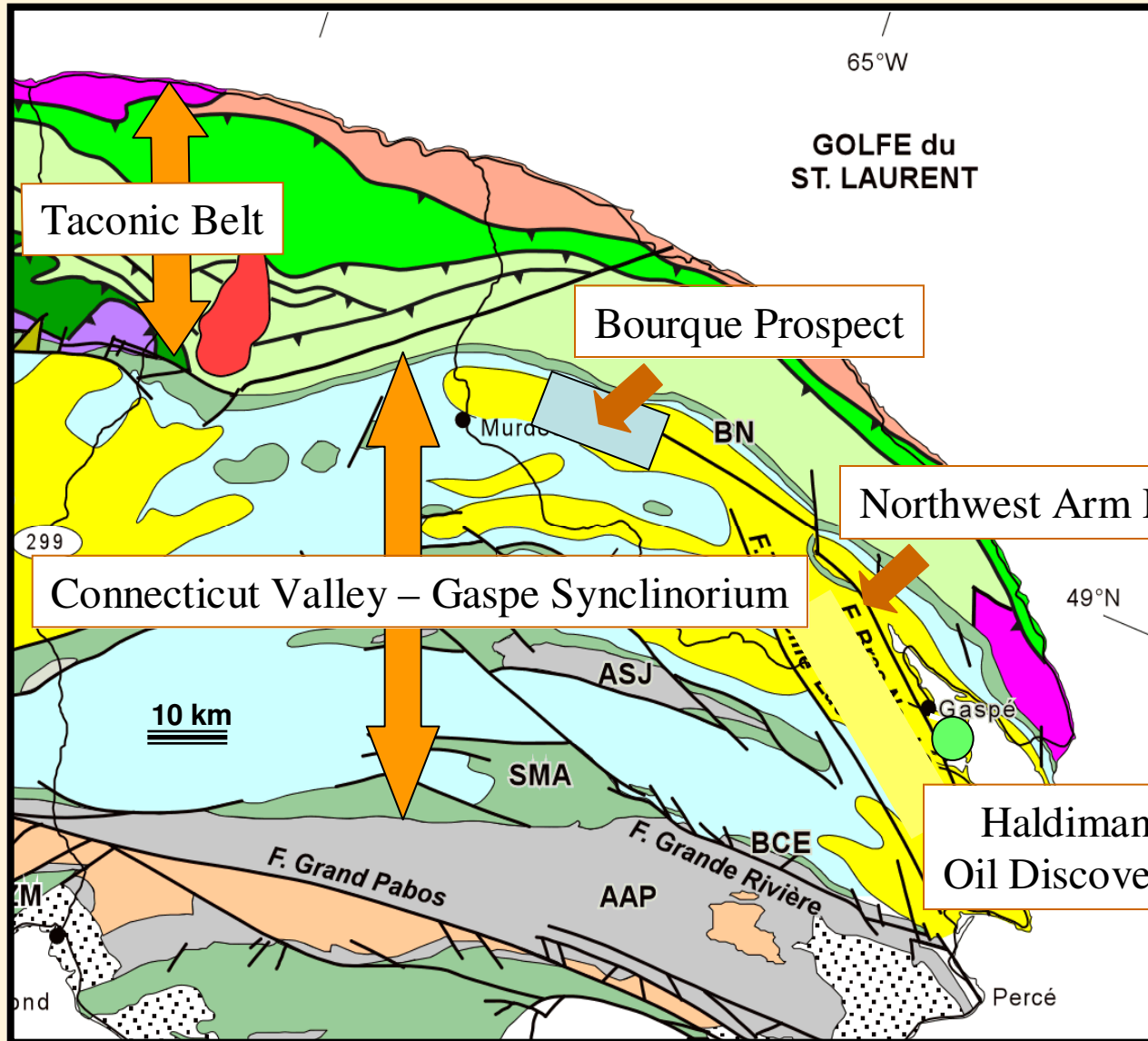
# Petrolia has W.I in 18% of the Quebec Exploration Licenses

Gross : 15 610 km<sup>2</sup>

Net : 11 293 km<sup>2</sup>

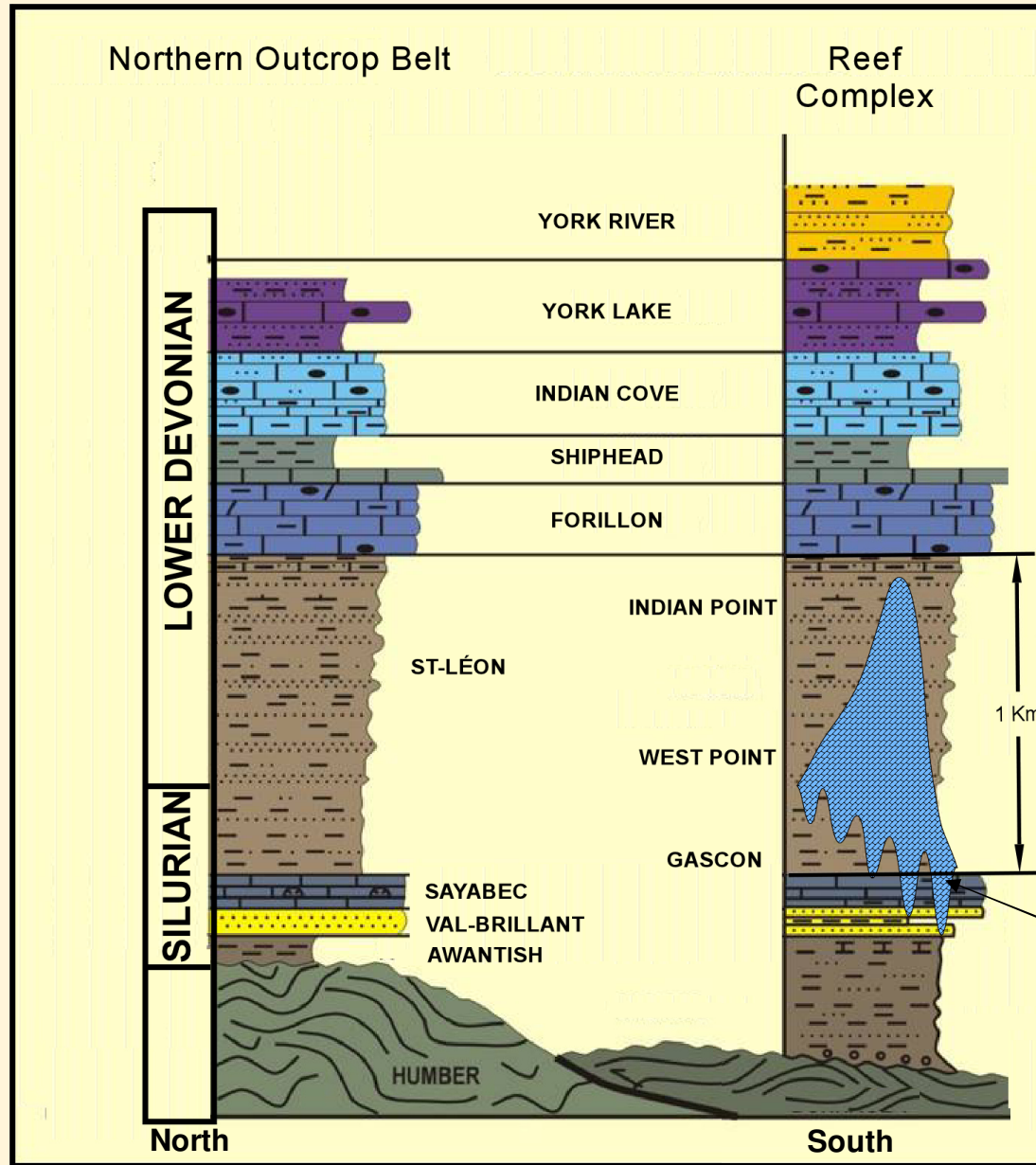


# Geology of Eastern Gaspé



# Bourque Prospect Area

West Point Reef Complex



Salinic Unconformity



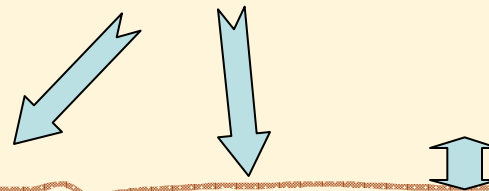
# Bourque Prospects

West Point Reef Complex

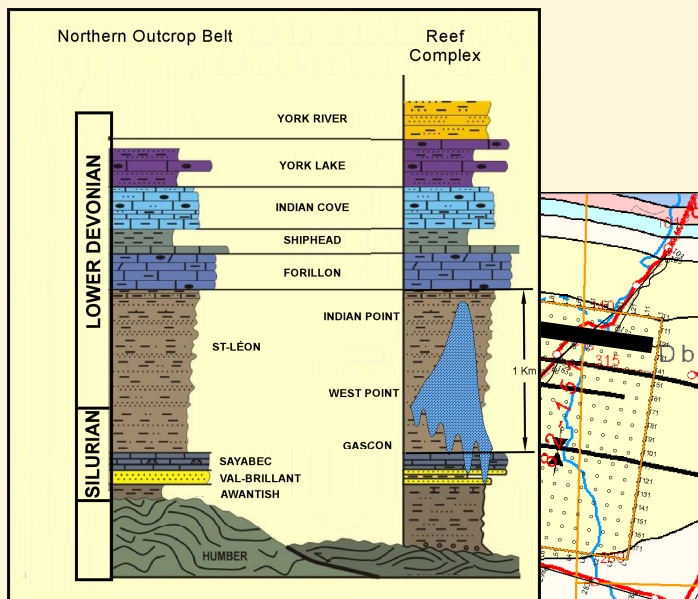
W

E

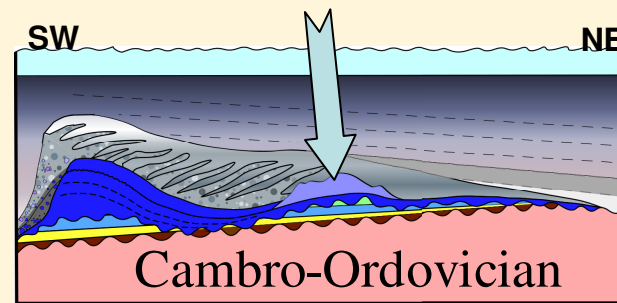
Pinnacle Reefs



Top Cambro-Ordovician



Pinnacle Reef



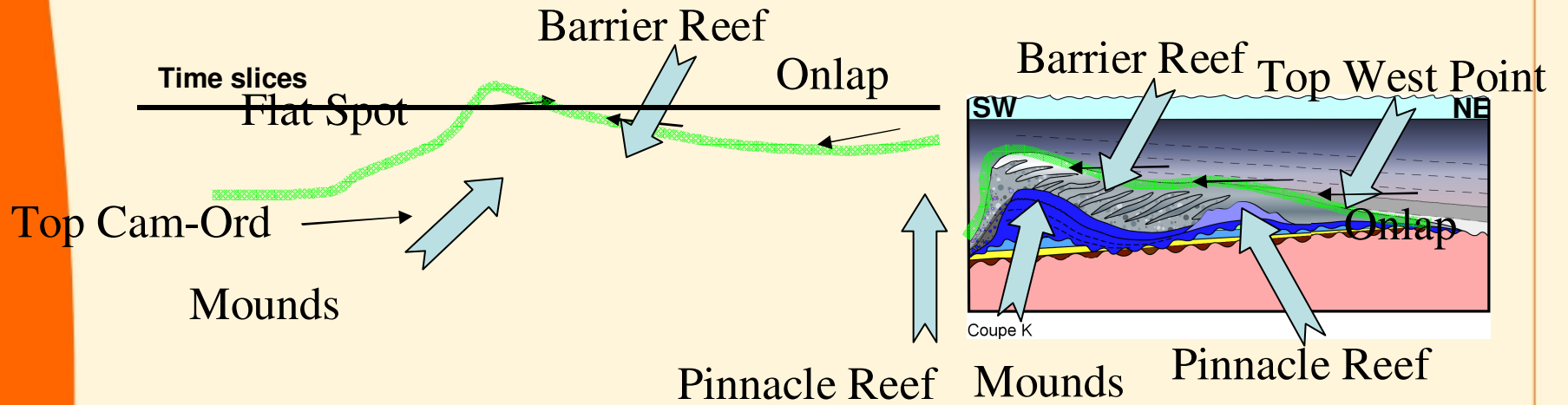
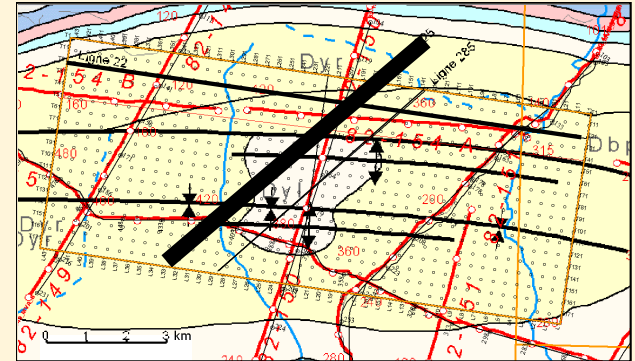
Coupe K

# Bourque Prospects

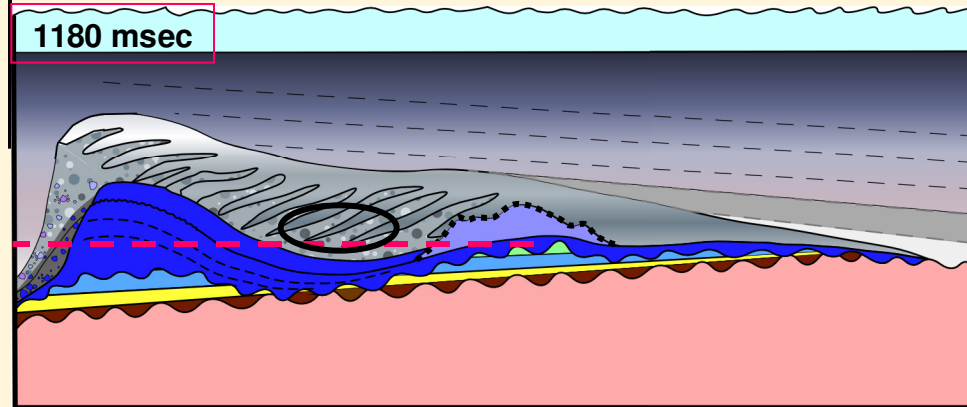
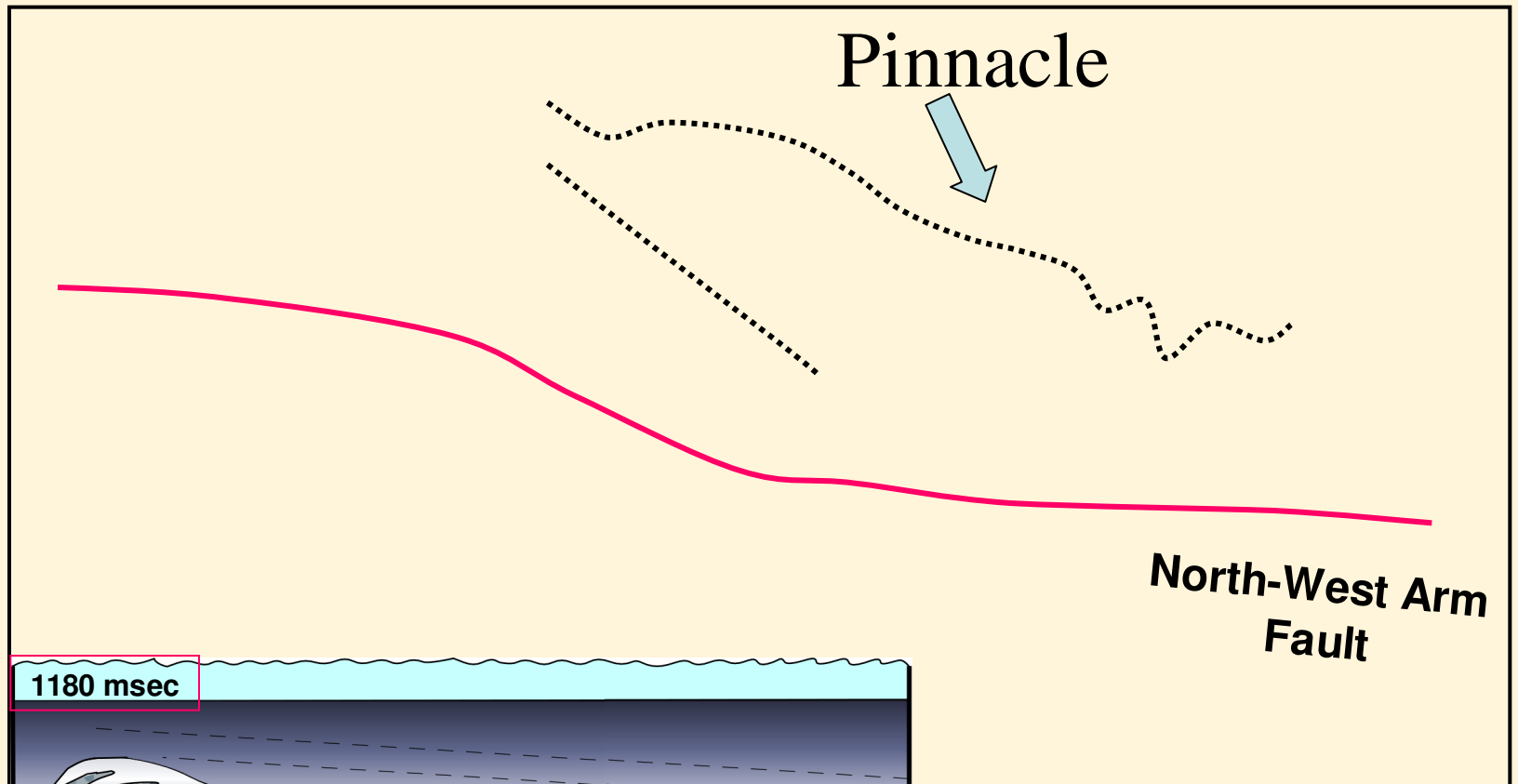
SW

North-West Arm Fault

NE



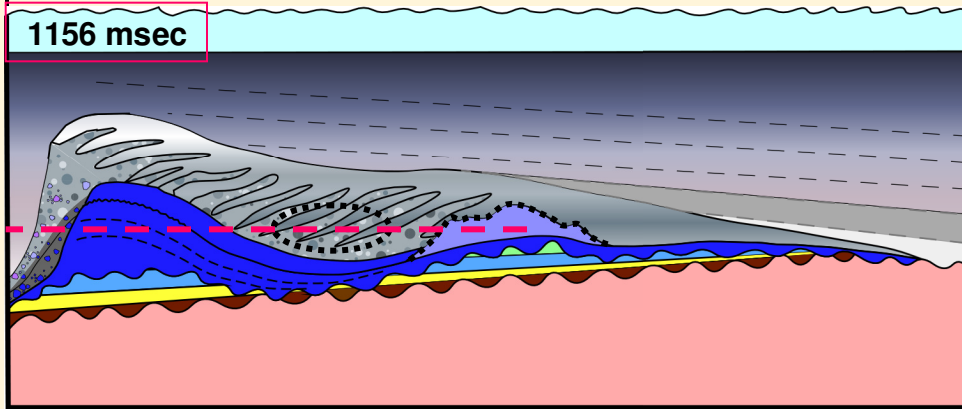
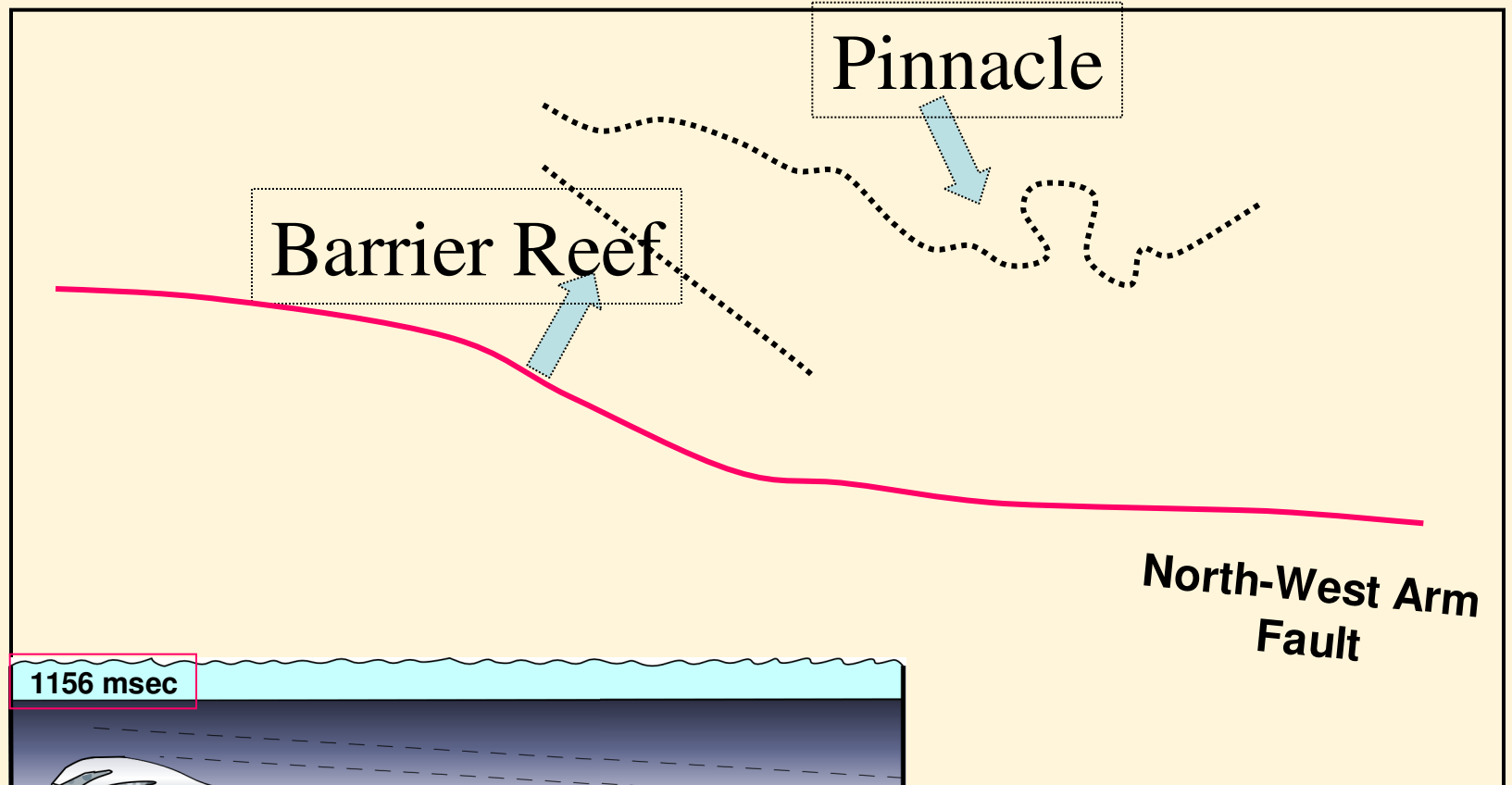
(1180 msec Time Slice)



Coupe K

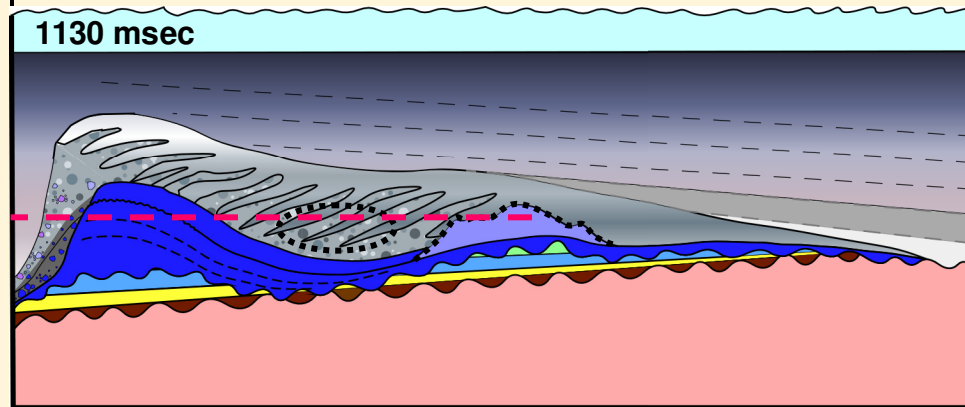
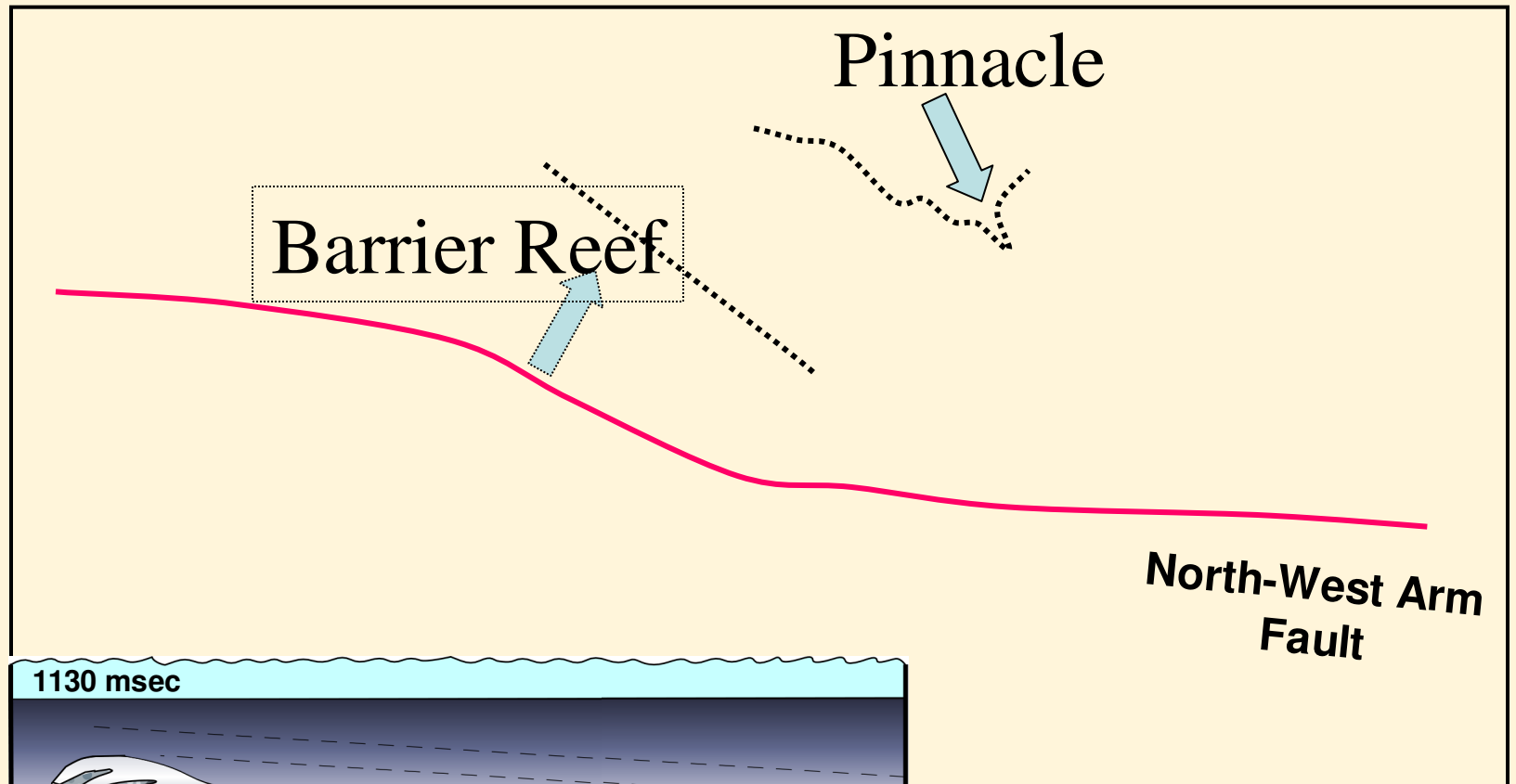


(1156 msec Time Slice)



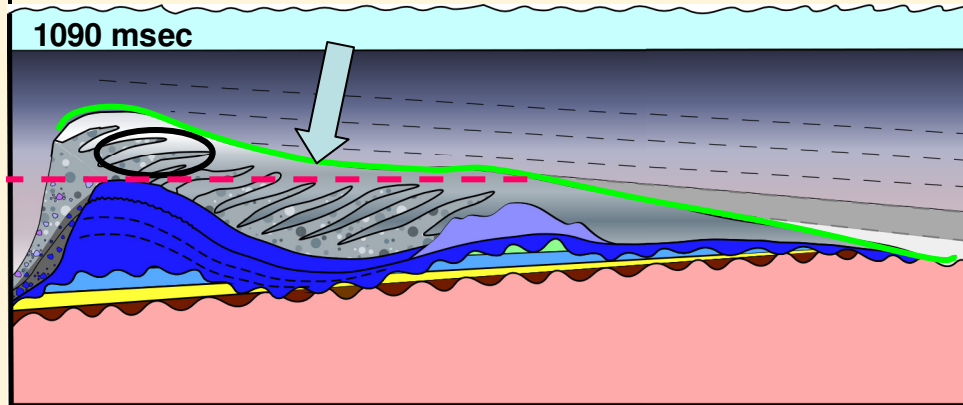
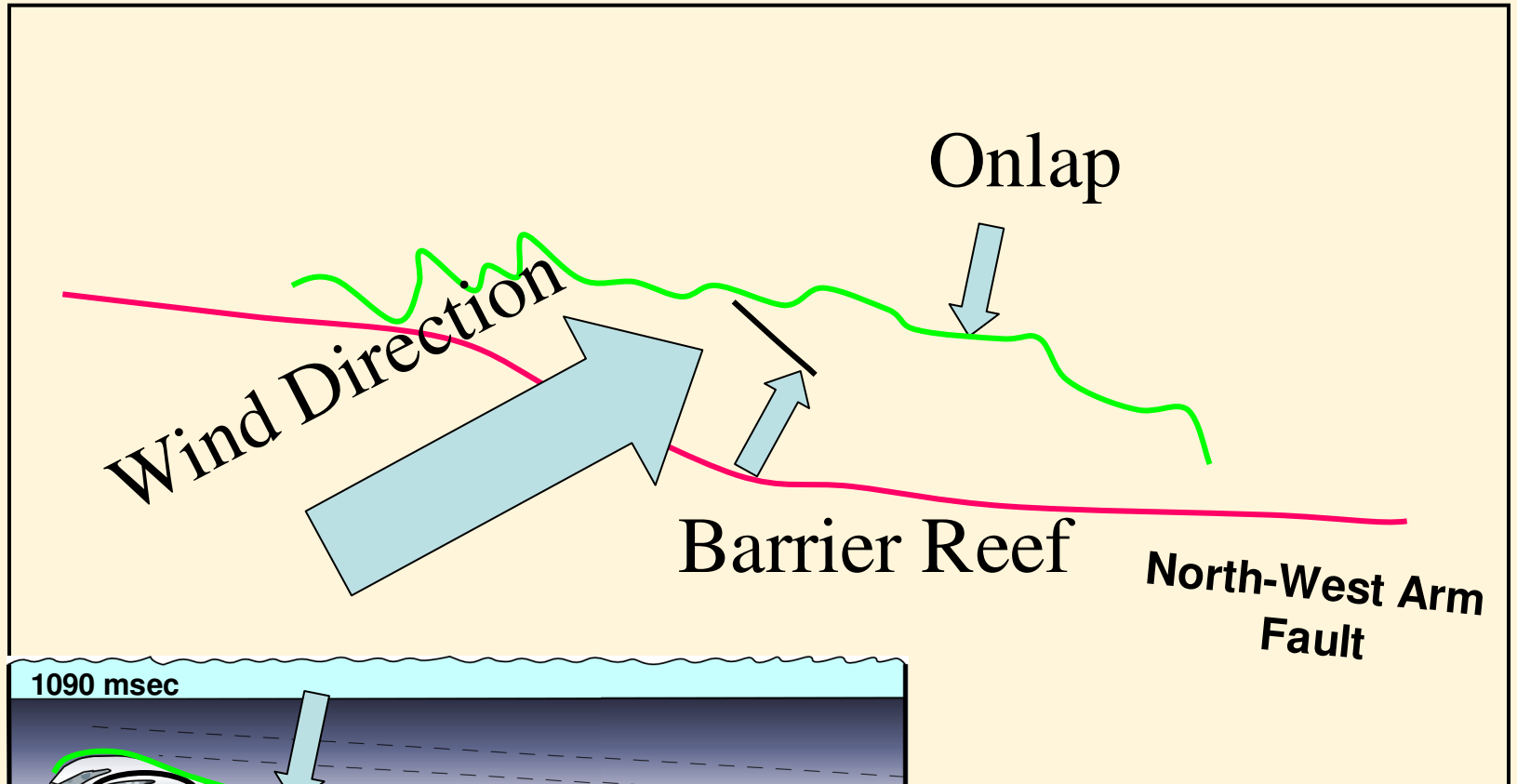
Coupe K

(1130 msec Time Slice)



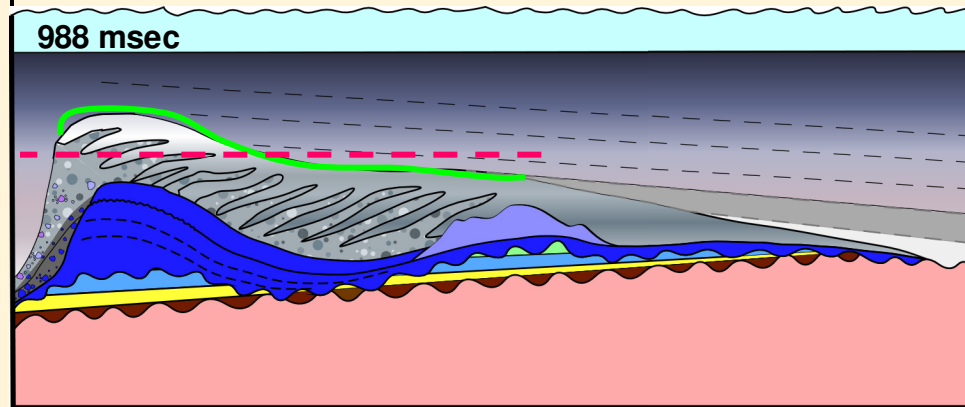
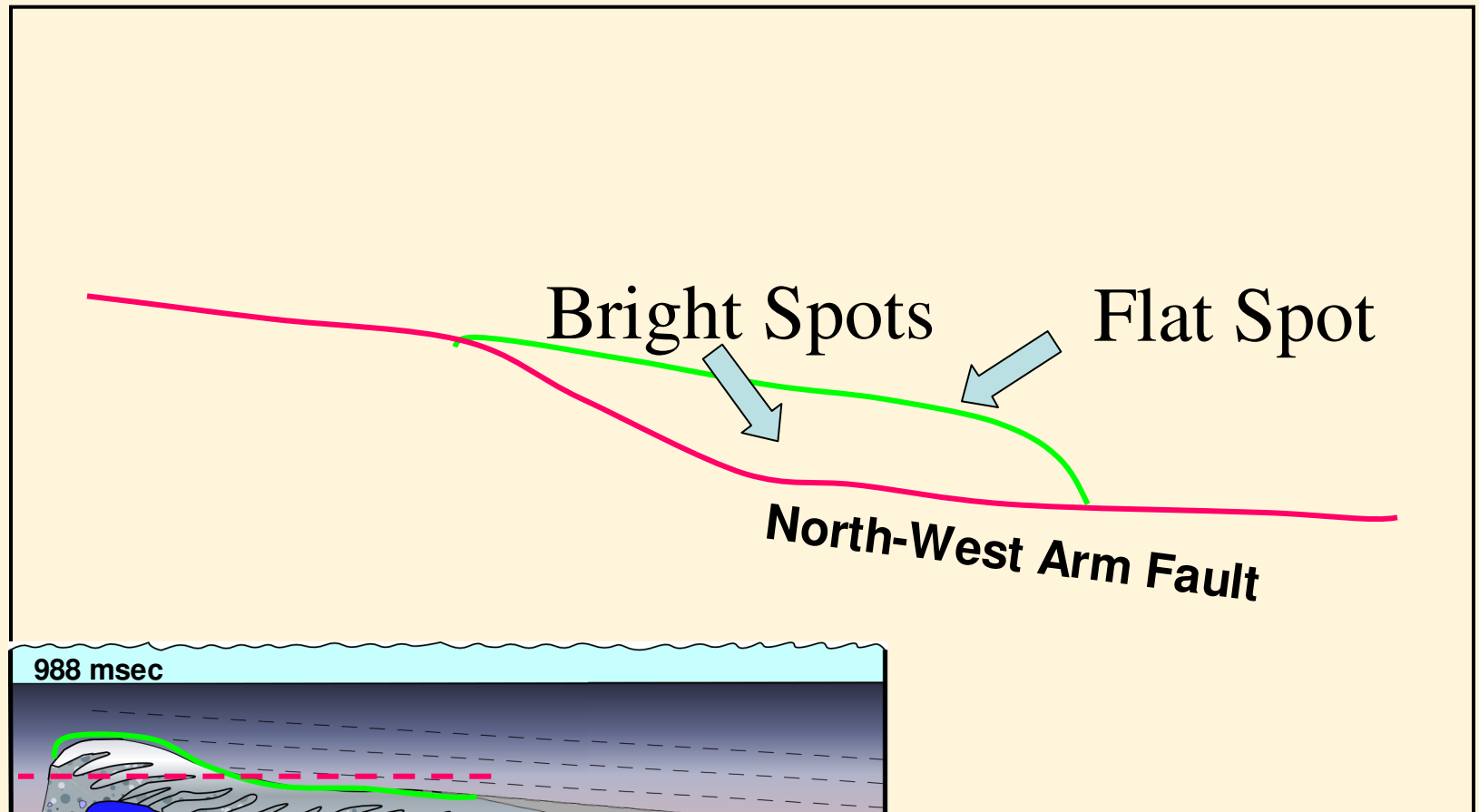
Coupe K

(1090 msec Time Slice)



Coupe K

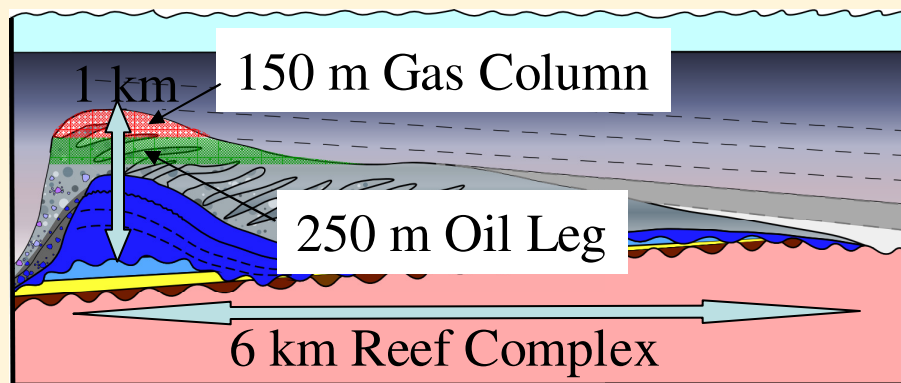
# Barrier Reef Prospect (988 ms Time Slice)



Coupe K

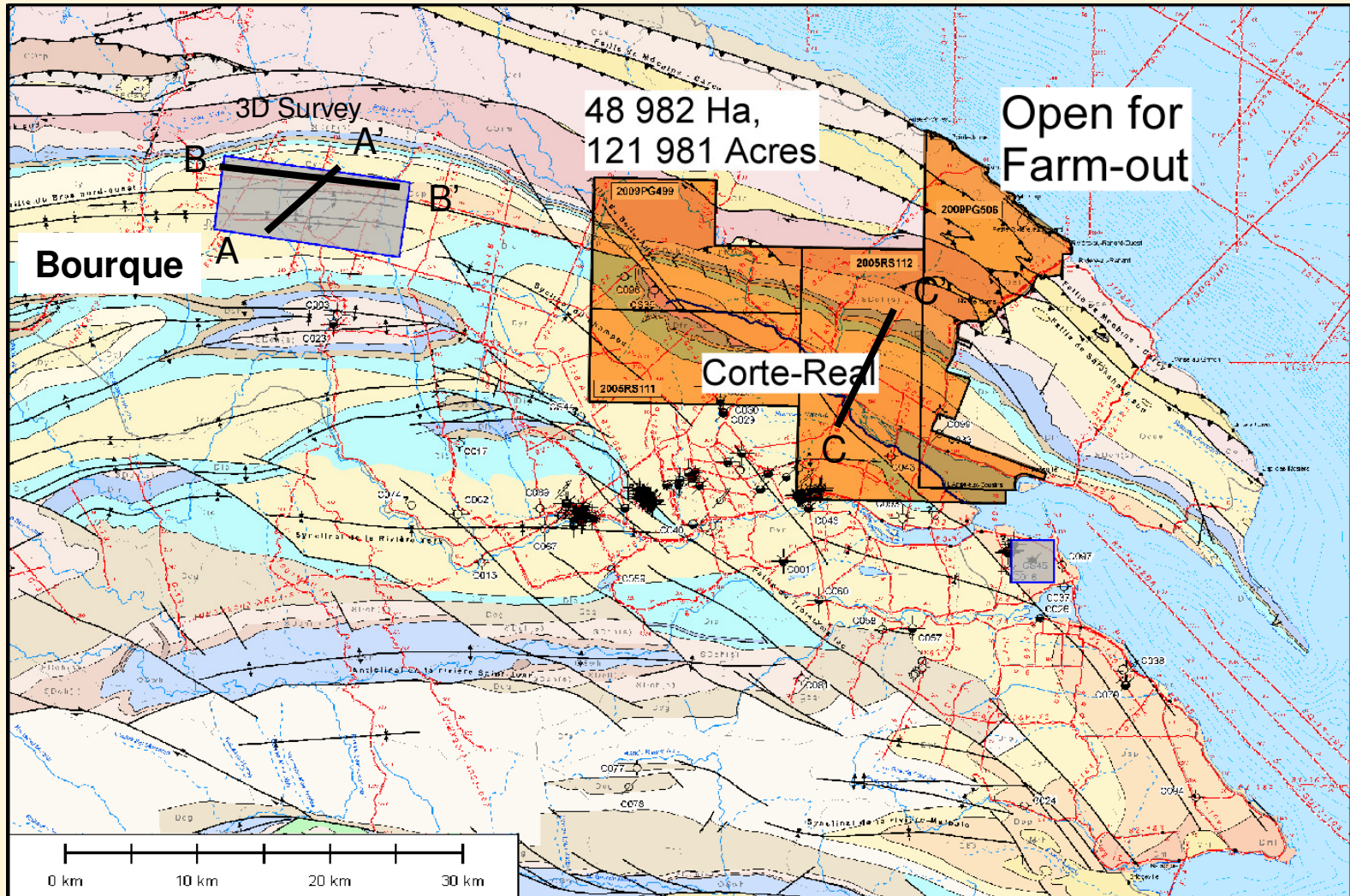
# Barrier Reef Prospect

*West Point Reef Complex*



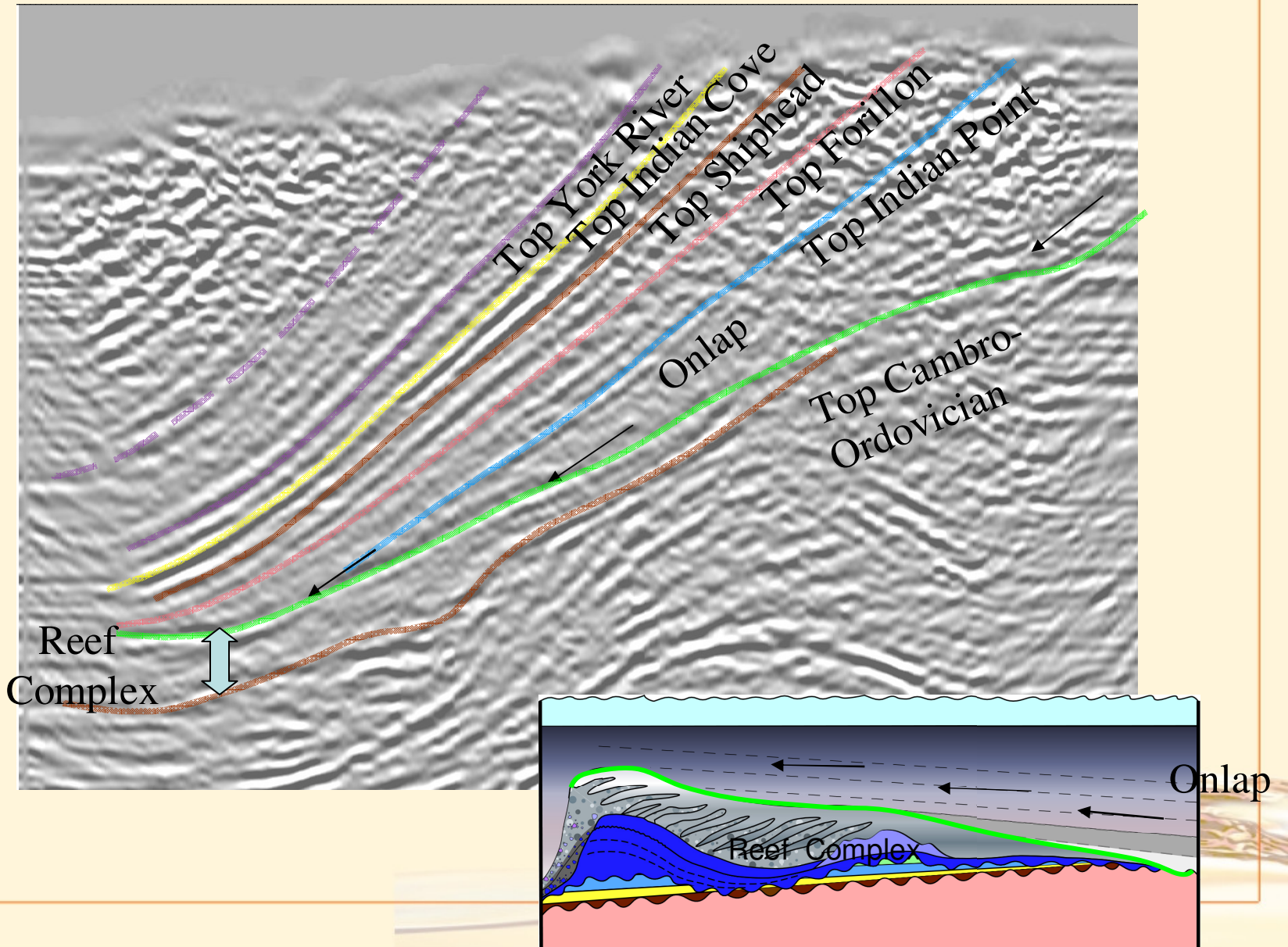
Coupe K

# Corte-Real Reef Play

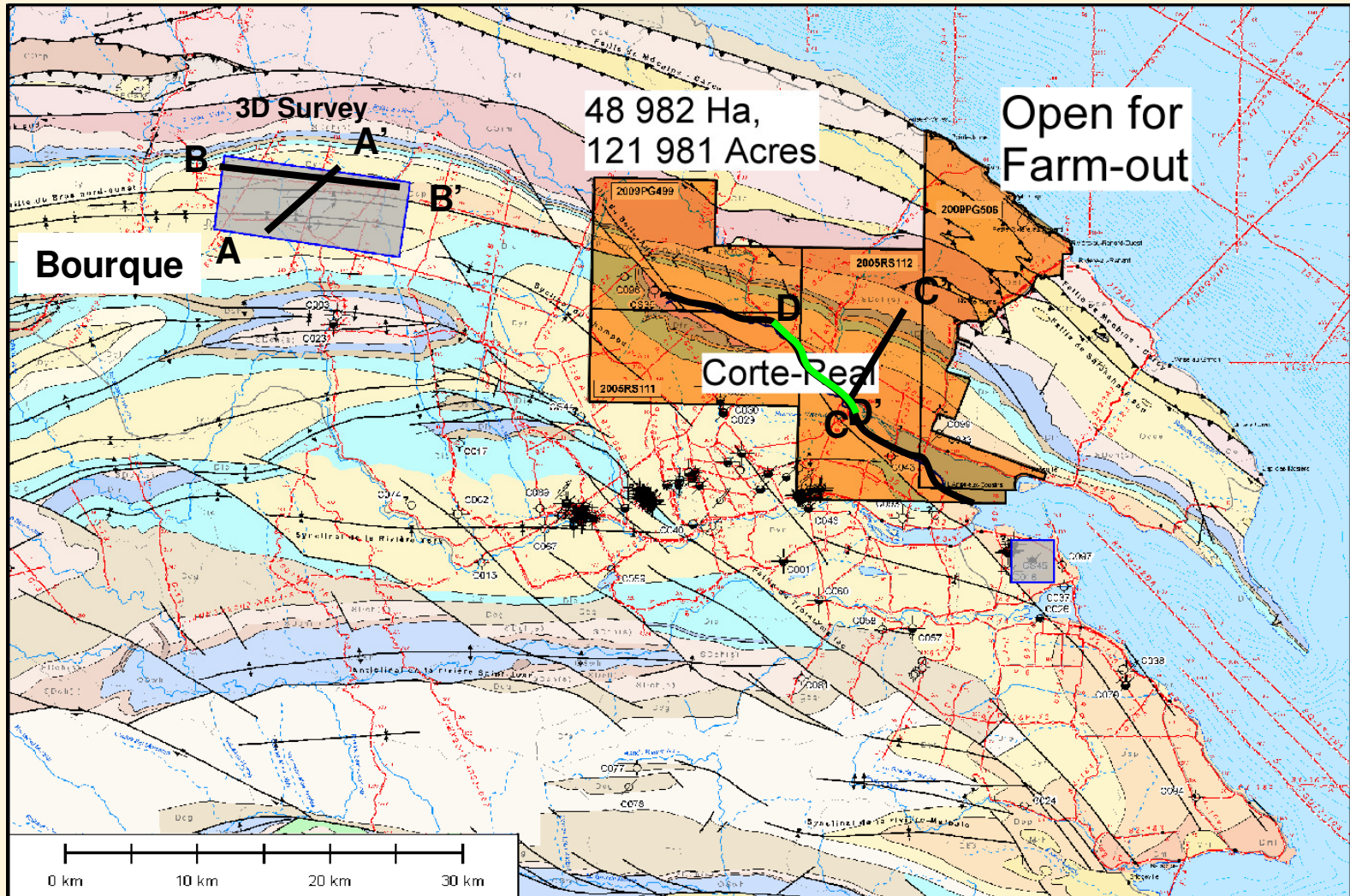


c Corte-Real Reef Play

c'



# Corte-Real Reef Play

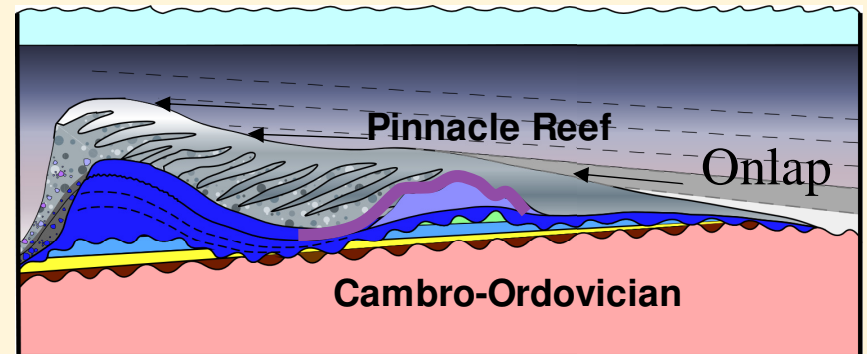
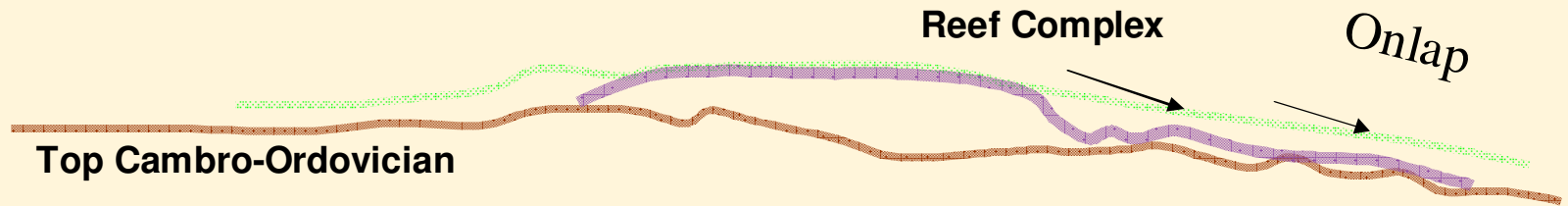




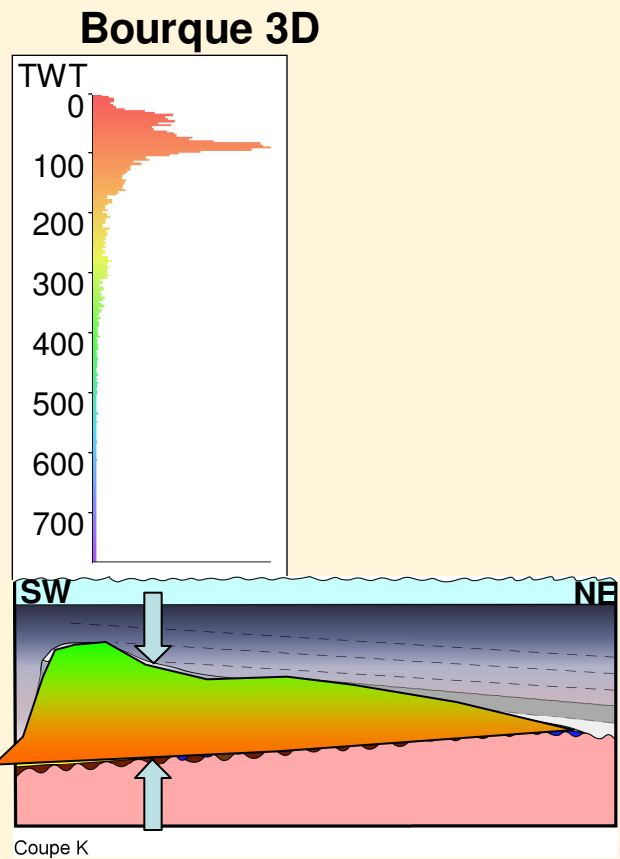
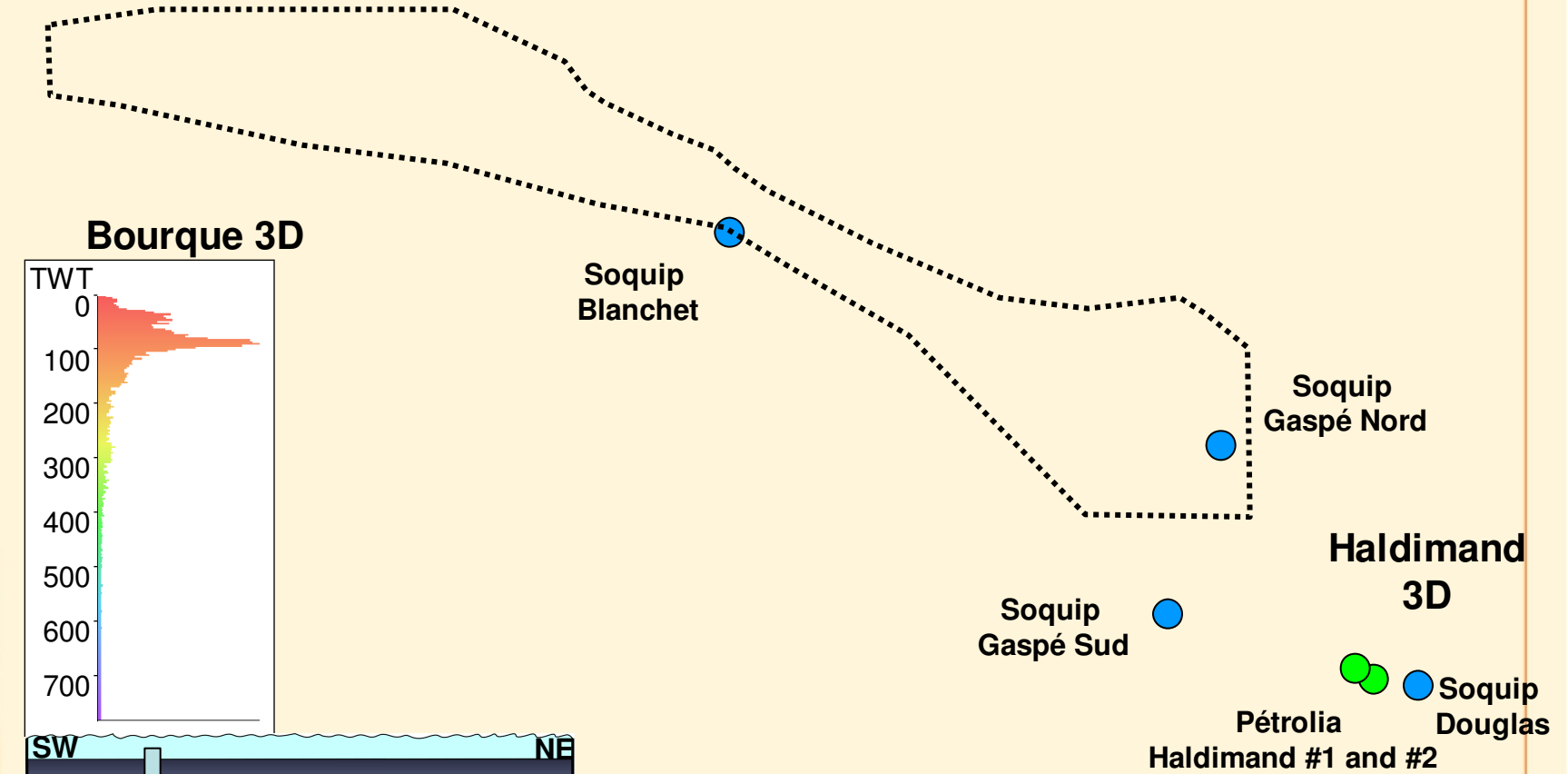
# Corte-Real Reef Play

D

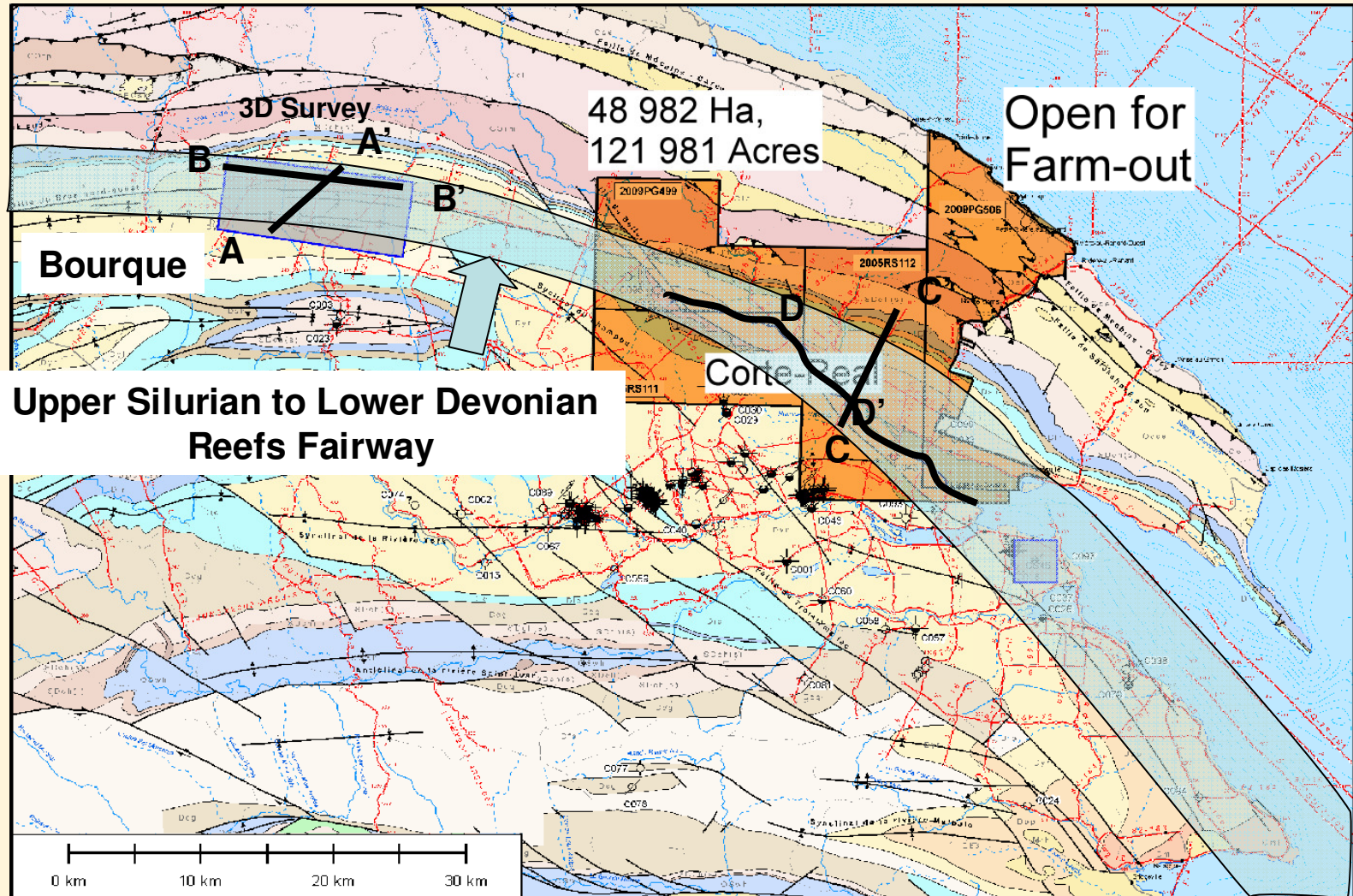
D'



# Corte-Real Reef Play West Point Complex (Time Thickness Map)



# Corte-Real Reef Play



## Pétrolia Model

## Conclusions

South

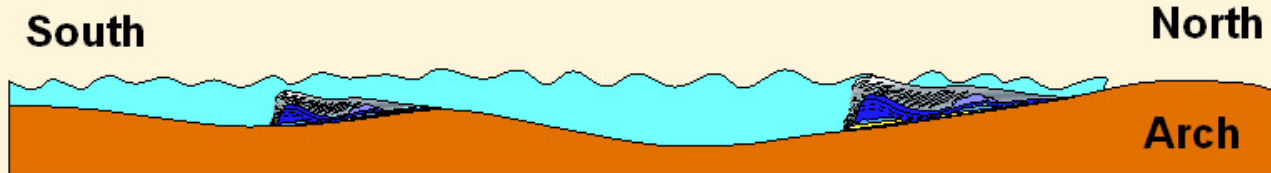
North



### Ludlow to Early Pridolian

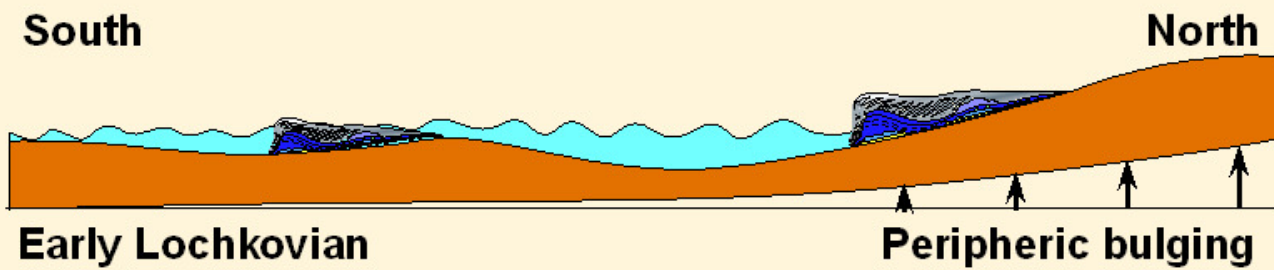
➤ During the Silurian and Lowermost Devonian (Early Lochkovian) the Gaspé Belt basin was isolated from the Anticosti Basin by a positive arch running at a slight angle with the present day Taconic Belt.





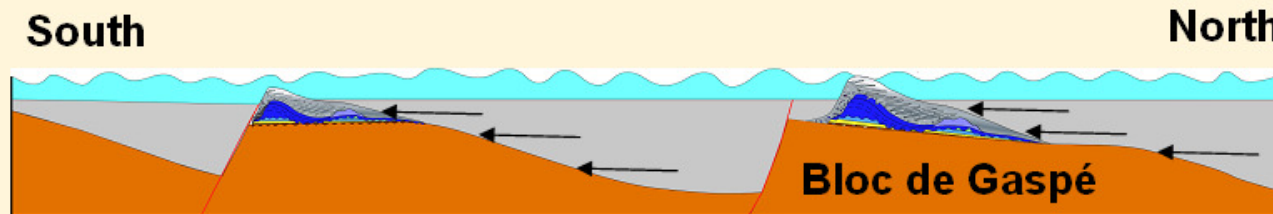
**Pridolian to Early Lochkovian**

- The formation of this reef complex is associated with a progressive rise of the sea level during a period of low tectonic activity;



➤ Following the formation of the reef complex, uplift and erosion took place at the margin of the basin which results in a sharp drop of sea level and potential karstification of the reef complex

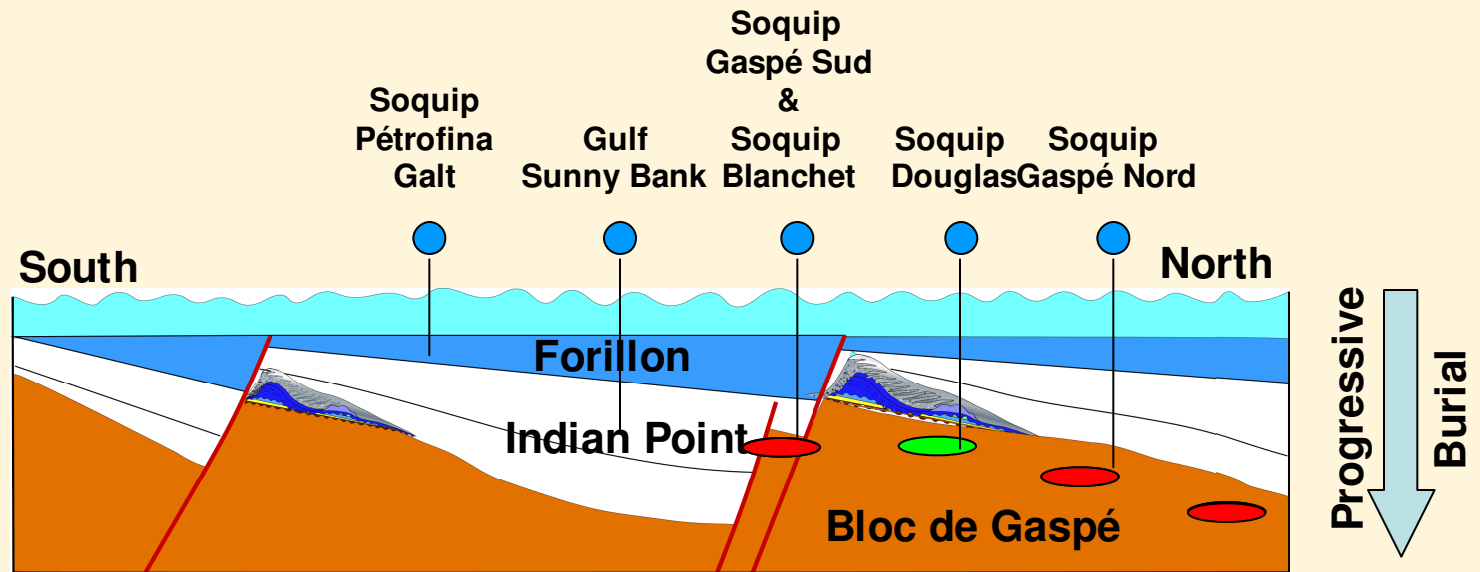




**Middle to Late Lochkovian**

- Block faulting during neo-acadian tectonism reversed the polarity of the basin from south to north, and connect it with the Anticosti basin;
- This uplift resulted in the creation of a regional topographic high designated by Pétrolia as the « Bloc de Gaspé »;
- Block rotation and associated normal faulting is contemporaneous with the progressive burial of the topographic high by fine grained siliciclastics of the Indian Point Fm and younger units;

Petroleum system



Late Lochkovian – Early Praguian

- The Bourque Reef Prospect is part a major reef fairway, located on the south flank of the Taconic Belt and extending to the West and to the South-East, at the margin of the Gaspé Belt Basin over a length of at least 90 km;
- Along this fairway Pétrolia has identified leads that may have the same potential as the Bourque Prospect;
- Pétrolia is promoting the Corte-Real Reef Complex Lead located at the head of the Gaspé Bay;
- Pétrolia invite you to visit its booth.



Anatomie d'un complexe  
récifal de type West Point

Anatomy of a West Point  
Reef Complex

Bernard Granger